

BFG of Design

I want to stop spending time looking for my glasses, or dropping my glasses.

Middle age

Degree in Mechanical Engineering

Full-time educator

Salary: 10 bars
Gold-pressed latinum

Family is his secret strength

User Environment:
Kindtoptia court

Wears body armor,
large boots,
visor and mask

Shoots kindness ray,
flies from place to place,
enjoys hiking

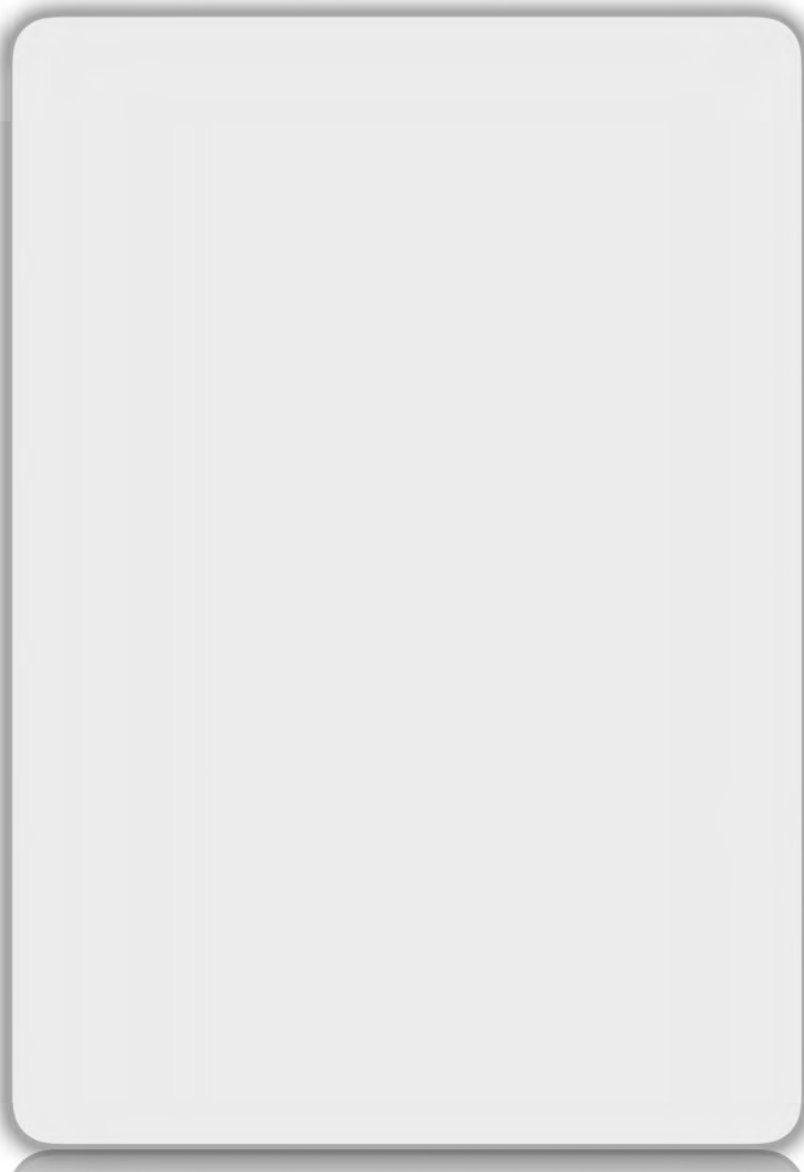


At least 5 times a day I take off my glasses and loose track of them. They fall-off with my mask when I try to look at products. They fog so I can't see.

And I can't see to work without them.

BFG persona





one page



BFG of Design

I want to stop spending
time looking for my glasses,
or dropping my glasses.



header



BFG of Design

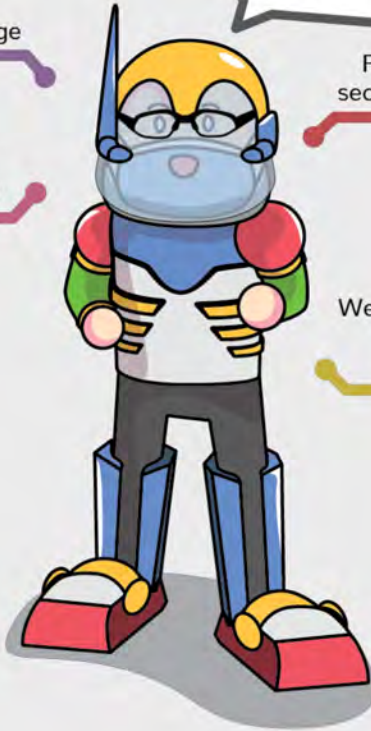
I want to stop spending time looking for my glasses, or dropping my glasses.

Middle age

Degree in Mechanical Engineering

Family is his secret strength

Wears body armor, large boots, visor and mask



personal



BFG of Design

I want to stop spending time looking for my glasses, or dropping my glasses.

Middle age

Degree in Mechanical Engineering

Full-time educator

Salary: 10 bars Gold-pressed latinum



Family is his secret strength

Wears body armor, large boots, visor and mask



professional



BFG of Design

I want to stop spending time looking for my glasses, or dropping my glasses.

Middle age

Degree in Mechanical Engineering

Full-time educator

Salary: 10 bars Gold-pressed latinum

Family is his secret strength

User Environment: Kindtoptia court

Wears body armor, large boots, visor and mask

Shoots kindness ray, flies from place to place, enjoys hiking



environment





end goal



BFG of Design

I want to stop spending time looking for my glasses, or dropping my glasses.

Middle age

Degree in Mechanical Engineering

Full-time educator

Salary: 10 bars
Gold-pressed latinum

Family is his secret strength

User Environment:
Kindtoptia court

Wears body armor,
large boots,
visor and mask

Shoots kindness ray,
flies from place to place,
enjoys hiking



At least 5 times a day I take off my glasses and loose track of them. They fall-off with my mask when I try to look at products. They fog so I can't see.

And I can't see to work without them.

scenario

