

SURVEY PLAN OF DISTRICT LOT 2086
COWICHAN DISTRICT
BCGS 92B 065

15 0 15 30 45

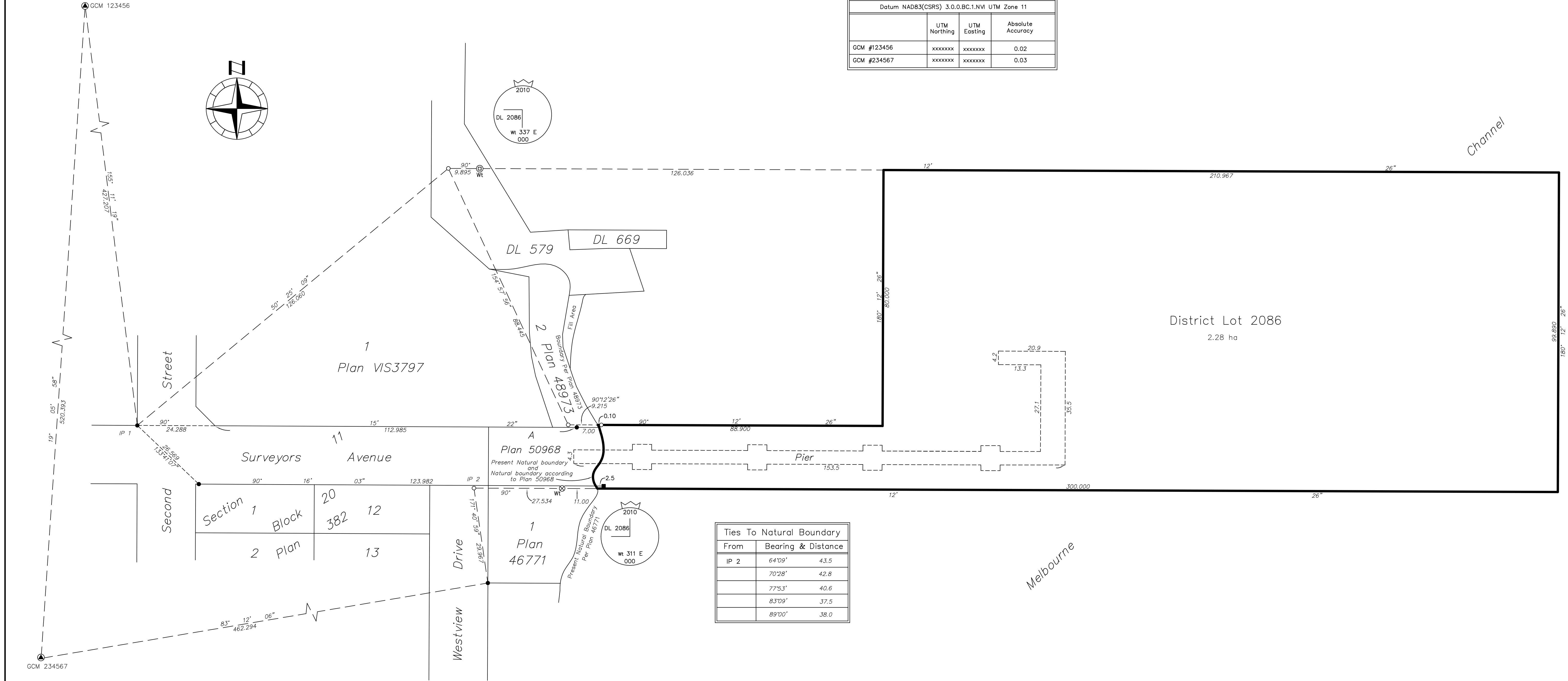
The intended plot size of this plan is 560mm in height
by 864mm in width (D size) when plotted at a scale of 1:600

Grid bearings are derived from dual frequency GNSS observations
and are referred to the central meridian of UTM zone 11

The UTM coordinates and estimated absolute accuracy
achieved are derived from dual frequency baseline ties to
Geodetic Control Monuments #123456 and #234567.

This plan shows horizontal ground level distances unless
otherwise specified. To compute grid distances, multiply ground level
distances by the average combined factor of [insert factor].

The average combined factor has been determined based on an
ellipsoidal elevation of [insert ellipsoidal elevation] metres.



This Plan lies within the
----- Regional District

The field survey represented by this plan was
completed on the [dd] day of [month], [yyyy].
[name of BCLS], BCLS [commission number]

Plan EPC544

70 cm² required for Registrar

Legend:

- Denotes Control Monument Found
- Denotes Standard Capped Post Placed
- Denotes Standard Rock Post Placed
- Denotes Standard Iron Post Found
- Denotes Standard Iron Post Placed
- Denotes Standard Lead Plug Found
- IP Denotes Iron Post

NOTE:

This plan shows one or more witness posts
which are not set on the true corner(s).

Georeferencing Table			
Datum: NAD83(CSRG) 3.0.0.BC.1.NVI UTM Zone 11			
	UTM Northing	UTM Easting	Absolute Accuracy
GCM #123456	xxxxxxx	xxxxxxx	0.02
GCM #234567	xxxxxxx	xxxxxxx	0.03

Ties To Natural Boundary		
From	Bearing & Distance	
IP 2	64°09'	43.5
	70°28'	42.8
	77°53'	40.6
	83°09'	37.5
	89°00'	38.0

Crown File No. -----

Survey Company
Address
Telephone number
File: E Land Act Foreshore